

PICTURE WINDOW

ARCHITECTURAL SYSTEMS FOR
THE MODERN AESTHETIC.

TECHNICAL CATALOG



**HURRICANE AND
IMPACT RESISTANT
WINDOWS & DOORS**

LMI FL# - FL47976.1
SMI FL# - FL47976.2

CERTIFICATIONS



**FBC
CERTIFICATE**

<https://n9.cl/nyabw>

PICTURE WINDOW

OVERVIEW & SPECIFICATIONS

Our fixed window was created with ultra-slim profiles to deliver a luxurious and minimalist aesthetic. It is the perfect choice for contemporary architecture, elegantly framing the landscape and allowing light to define every space exceptionally.

SPECIFICATIONS

Fixed glass window



DIMENSIONS

- LMI Design: Design load: 80 PSF
Max Panel Dimensions: 60" Width x 108" Height
- SMI Design: Design load 120 PSF
Max Panel Dimensions: 48" Width x 108" Height
- Air infiltration: 6.27 PSF
- Water infiltration: 18 PSF

GLASS OPTIONS

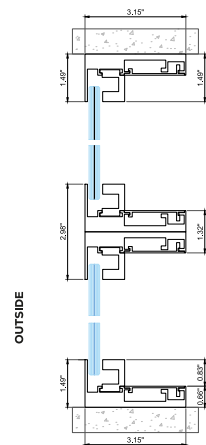
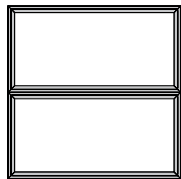
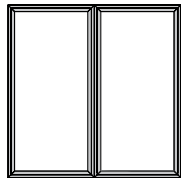
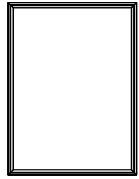
- Laminated

Our glass is certified by SGCC and IGCC, ensuring that our processes always deliver the highest quality.

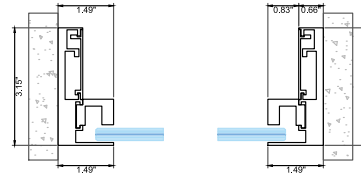
PICTURE WINDOW

CONFIGURATION & SECTION DETAILS

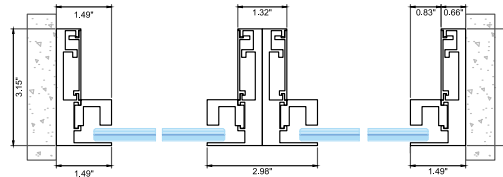
Vertical section



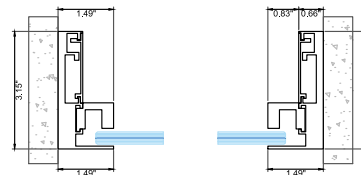
Horizontal section



OUTSIDE



OUTSIDE



OUTSIDE



FINISHES & COLORS

DC13 Bone White



DC04 Grey



DC05 Dark Grey



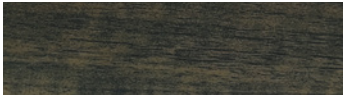
DC12 Black



DC11 Bronze



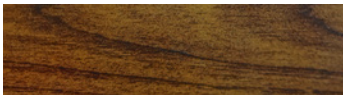
MA07



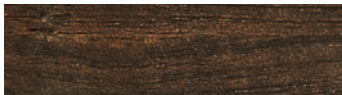
MA08



MA09



MA10



Custom colors available upon request.



Uni-K[®]
FENESTRATION

+305 420 6910

quotes@unik-windows.com

@unik.windows

VISIT OUR SHOWROOM

1 Curtis Pkwy. UNIT 11,
Miami, FL 33166
United States



DOWNLOAD THIS
BROCHURE WITH THIS QR

OR VISIT OUR WEBSITE
WWW.UNIK-WINDOWS.COM