



CASEMENT OUT / AWNING WITH CRANK OPERATOR

ARCHITECTURAL SYSTEMS FOR
THE MODERN AESTHETIC.

TECHNICAL CATALOG



HURRICANE AND
IMPACT RESISTANT
WINDOWS & DOORS

LMI FL# - FL48233.1

CERTIFICATIONS



FBC
CERTIFICATE

<https://n9.cl/bqfaf2>



FBC
CERTIFICATE

<https://n9.cl/q8q9m>

CASEMENT OUT / AWNING

OVERVIEW & SPECIFICATIONS

A masterpiece of design, uses an operator for its double function: a file offers a seamless operation that maximizes ventilation and view, distinguishing every project with innovation and style.

SPECIFICATIONS

- Awning / Casement out
- Multipoint sash lock system
- Crank Operator
- Screen incorporated optional



DIMENSIONS

- LMI Design: Design load: 80 PSF
Max Panel Dimensions: 60" Width x 108" Height
- SMI Design: Design load 120 PSF
Max Panel Dimensions: 48" Width x 108" Height
- Air infiltration: 6.27 PSF
- Water infiltration: 18 PSF

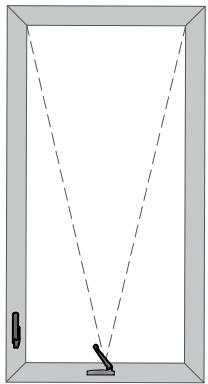
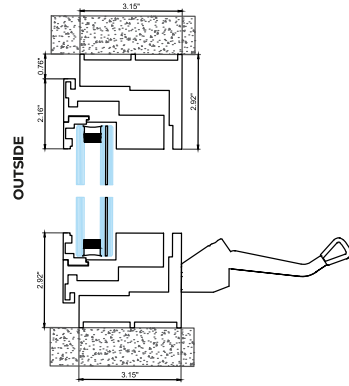
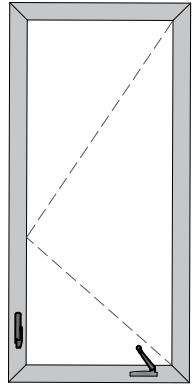
GLASS OPTIONS

- Laminated
- Insulated
- Insulated laminated
- Our glass is certified by SGCC and IGCC, ensuring that our processes always deliver the highest quality.

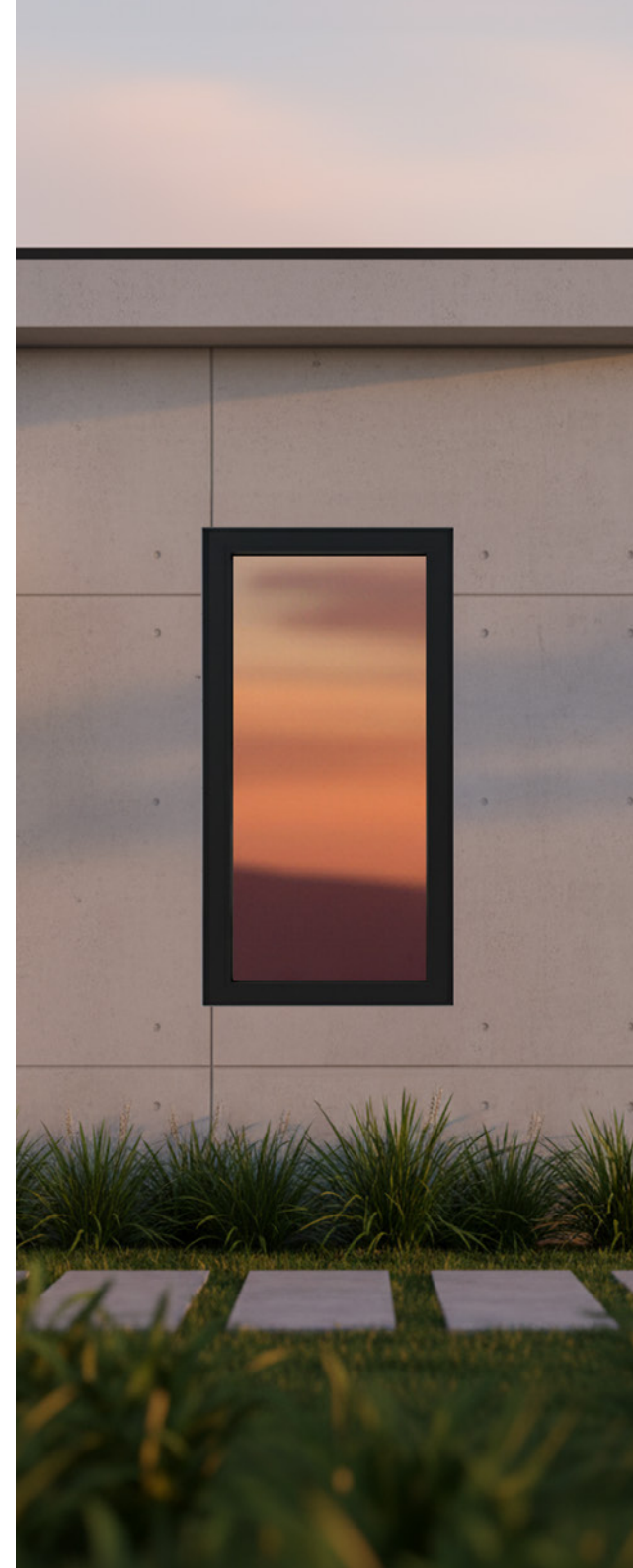
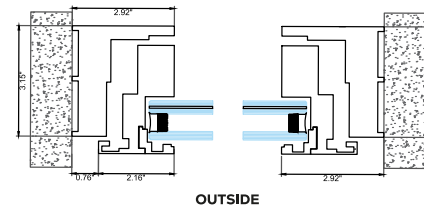
CASEMENT OUT / AWNING

CONFIGURATION & SECTION DETAILS

Vertical section



Horizontal section



FINISHES & COLORS

DC13 Bone White



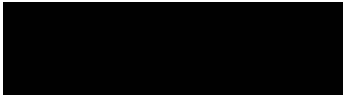
DC04 Grey



DC05 Dark Grey



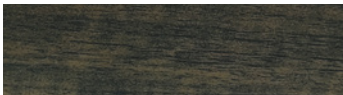
DC12 Black



DC11 Bronze



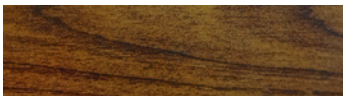
MA07



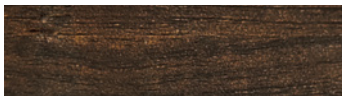
MA08



MA09



MA10



Custom colors available upon request.



Uni-K[®]
FENESTRATION

+305 420 6910

quotes@unik-windows.com

@unik.windows

VISIT OUR SHOWROOM

1 Curtis Pkwy. UNIT 11,
Miami, FL 33166
United States



DOWNLOAD THIS
BROCHURE WITH THIS QR

OR VISIT OUR WEBSITE
WWW.UNIK-WINDOWS.COM