



KA PUSH OUT

Our beautiful KA line is designed to give your project a minimalist look that highlights the exterior view rather than the system frames. Even with such minimal frames, they meet all hurricane safety standards.

Specifications

- Casement out Window / Balcony Door
- Thermally broken
- Multi point lock system
- Hidden hinges
- Internal Hidden Frame option
- Bicolor option

<https://n9.cl/bud6w>



NFRC
CERTIFICATE



HURRICANE AND
IMPACT RESISTANT
WINDOWS & DOORS

Uni-K
FENESTRATION



KA PUSH OUT

LMI Design

- Design load: 70 PSF
- Max Dimensions:
40" Width x 108" Height

SMI Design

- Design load 110 PSF
- Max Dimensions:
50" Width x 76" Height

NON Impact

- Design load 100.25 PSF
- Max Dimensions:
50" Width x 76" Height

- Air infiltration: 6.27 PSF
- Water infiltration: 16.5 PSF

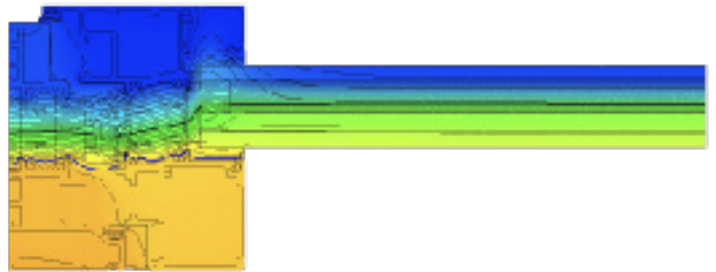


Glass Options:

- Laminated
- Insulated
- Insulated laminated

Our glass is certified by SGCC and IGCC, ensuring that our processes always deliver the highest quality

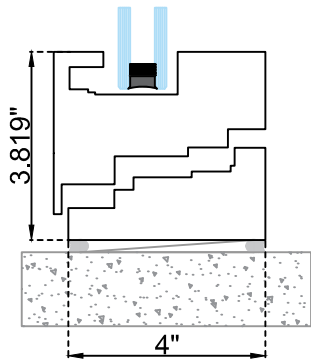
Thermal Performance Simulation



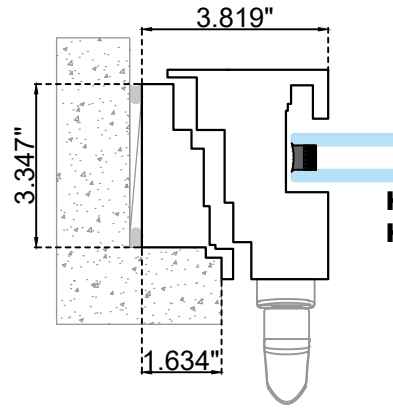
Type: Single Sash
Width: 38"
Height: 130"
Glass: ¼" Solarban 70 Clear + ½" Air Spacer + ¼" Clear

- U Factor:
1.98 W/m²K
0.348 BTU / (h*ft²*°F)

Vertical / Horizontal Section

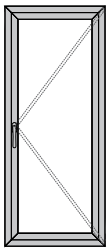


Full Frame

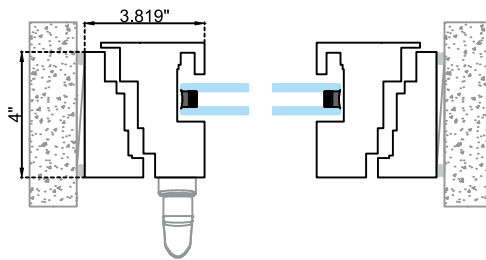


Hidden frame
Horizontal Section

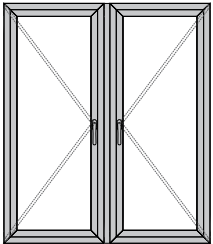
TYPES



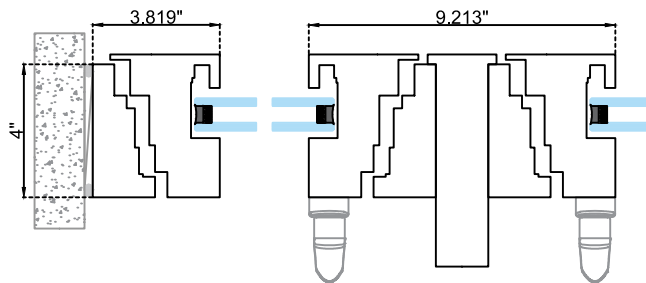
Single Sash



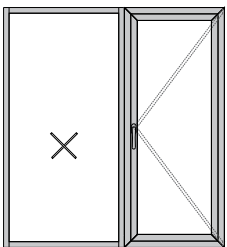
Horizontal Section



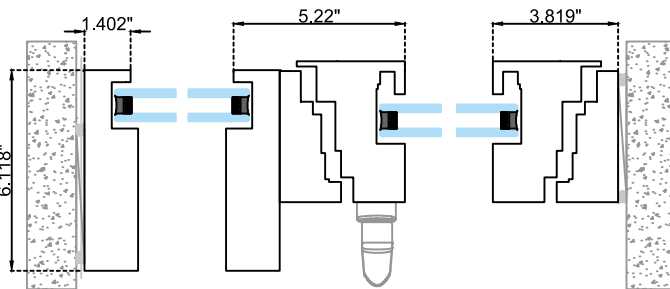
Double Sash



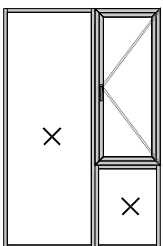
Horizontal Section



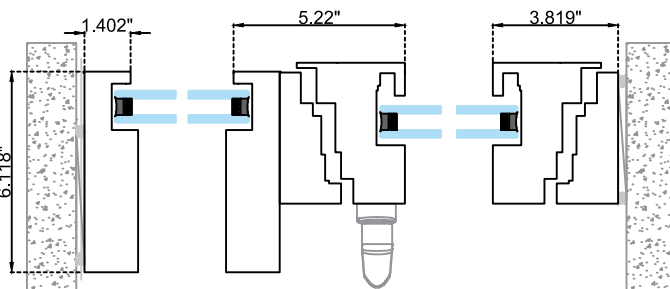
Single Sash+ Fixed



Horizontal Section



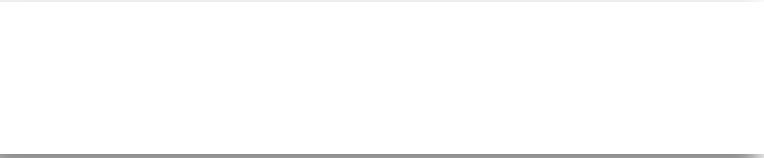
Single Sash + Fixed



Horizontal Section

COLORS

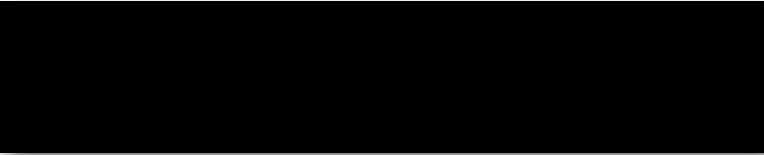
DC13 Matte White



DC04 Grey



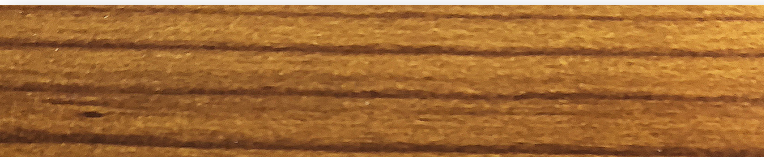
DC12 Black



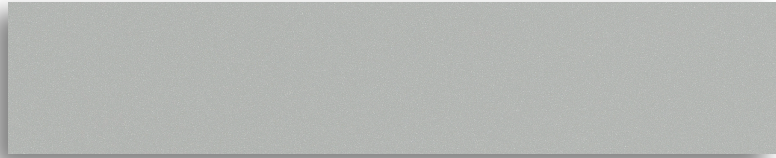
MA04



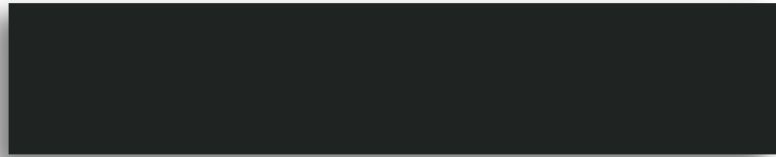
MA08



DC02 Silver



DC05 Dark Grey



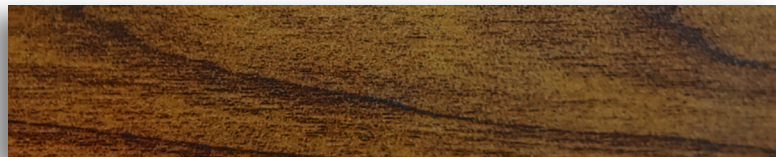
DC11 Bronze



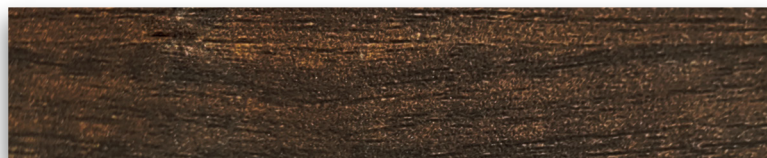
MA07



MA09



MA10



Uni-K
FENESTRATION

+305 420 6910

info@unik-windows.com

  @unik.windows

Download this brochure
with this QR



or visit our website
www.unik-windows.com